



SANAYİ TİPİ ASPİRATÖR ve VANTİLATÖR İMALATI



Firmamız 1992 yılında kurulmuş olup, kurduğumuz günden itibaren Radyal ve Aksiyal Vantilatör İmalatı, Havalandırma, Isıtma-Soğutma sektöründe ve Toz Toplama konularında titizlikle faaliyetlerini devam ettirmektedir.

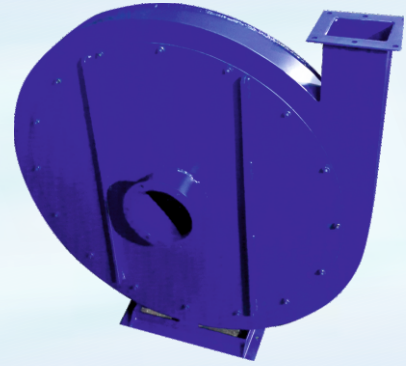
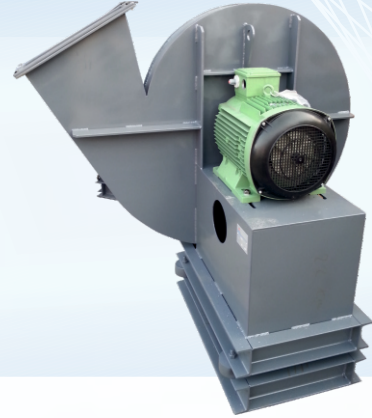
UMUT FAN olarak üretimimizde hizmeti ön planda tutarak müşterilerimize güvenilir ve sorunsuz ürünler sunmayı ilke olarak benimsemekteyiz.

Saygılarımızla  
UMUT FAN

## UMT-03 Yüksek Basıncılı Vakum K r kleri

### Kullanım Alanları:

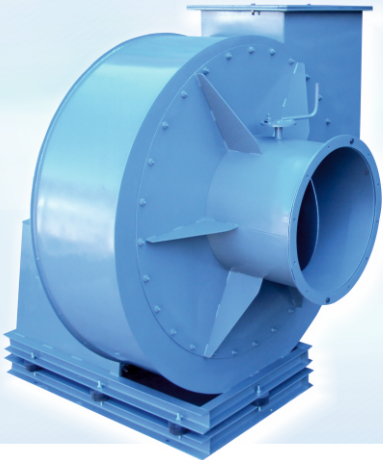
- ◀ İnce tanecikli malzeme naklinde (mermer ve tahta tozu, gran l plastik vs.)



### Kullanım Alanları:

- ◀ Temiz ve Tozlu Hava EmiŐi i in kullanılır.
- ◀ Boya, cila at yeleri ve yapışkan madde i eren sistemlerde kullanılır.

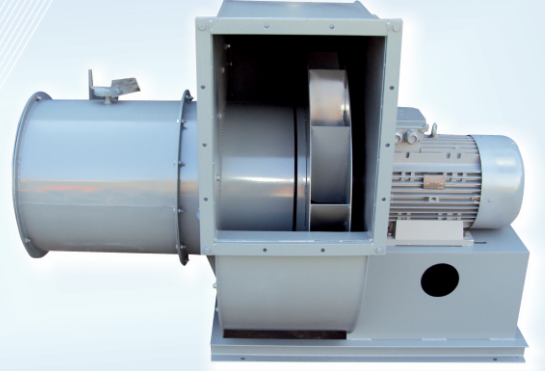
## UMT-04 Al ak Basıncılı Radyal Vantilat rler



## Orta Basınçlı Radyal Vantilatörler UMT-01

### Kullanım Alanları:

- ◀ İnce tanecikli malzeme naklinde (mermer ve tahta tozu, granül plastik vs.)
- ◀ Orta basınçlı havanın gerektiği yerlerde
- ◀ Toz toplama
- ◀ Çimento ,seramik , yem fabrikalarında

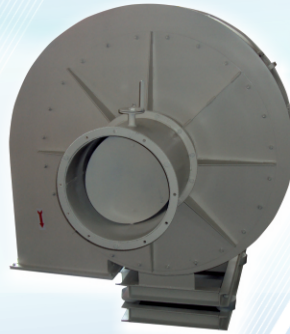


## Pnömatik Vantilatörler

### UMT-02

### Kullanım Alanları:

- Un irmik ve yem fabrikalarında



## TOZ / FİLTRE / İRMİK SASÖR / TAŞ AYIRICI ASPİRATÖRLER

5.5 HP	7.5 HP	10 HP	15 HP	20 HP	25 HP	30 HP	40 HP	50 HP	Toplam Basınç (mmss)
Kapasite(m <sup>3</sup> /h)	Kapasite(m <sup>3</sup> /h)	Kapasite(m <sup>3</sup> /h)	Kapasite(m <sup>3</sup> /h)	Kapasite(m <sup>3</sup> /h)	Kapasite(m <sup>3</sup> /h)	Kapasite(m <sup>3</sup> /h)	Kapasite(m <sup>3</sup> /h)	Kapasite(m <sup>3</sup> /h)	20 C - Çalışma Şartları
6.930	9.450	12.600	18.900	25.200	31.500	37.800	50.400	63.000	150
6.497	8.859	11.813	17.719	23.625	29.531	35.438	47.250	59.063	160
6.115	8.338	11.118	16.676	22.235	27.794	33.353	44.471	55.588	170
5.775	7.875	10.500	15.750	21.000	26.250	31.500	42.000	52.500	180
5.471	7.461	9.947	14.921	19.895	24.868	29.842	39.789	49.737	190
5.198	7.088	9.450	14.175	18.900	23.625	28.350	37.800	47.250	200
4.950	6.750	9.000	13.500	18.000	22.500	27.000	36.000	45.000	210
4.725	6.443	8.591	12.886	17.182	21.477	25.773	34.364	42.955	220
4.520	6.163	8.217	12.326	16.435	20.543	24.652	32.870	41.087	230
4.331	5.906	7.875	11.813	15.750	19.688	23.625	31.500	39.375	240
4.158	5.670	7.560	11.340	15.120	18.900	22.680	30.240	37.800	250
3.998	5.452	7.269	10.904	14.538	18.173	21.808	29.077	36.346	260
3.850	5.250	7.000	10.500	14.000	17.500	21.000	28.000	35.000	270
3.713	5.063	6.750	10.125	13.500	16.875	20.250	27.000	33.750	280
3.584	4.888	6.517	9.776	13.034	16.293	19.552	26.069	32.586	290
3.465	4.725	6.300	9.450	12.600	15.750	18.900	25.200	31.500	300
3.353	4.573	6.097	9.145	12.194	15.242	18.290	24.387	30.484	310
3.248	4.430	5.906	8.859	11.813	14.766	17.182	23.625	29.531	320
3.150	4.295	5.727	8.591	11.455	14.318	16.676	22.909	28.636	330
3.057	4.169	5.559	8.338	11.118	13.897	16.200	22.235	27.794	340
2.970	4.050	5.400	8.100	10.800	13.500	15.750	21.600	27.000	350
2.888	3.938	5.250	7.875	10.500	13.125	15.324	21.000	26.250	360
2.809	3.831	5.108	7.662	10.216	12.770	14.921	20.432	25.541	370
2.739	3.730	4.974	7.461	9.947	12.434	14.538	19.895	24.868	380
2.665	3.635	4.846	7.269	9.692	12.115	14.175	19.385	24.231	390
2.599	3.544	4.725	7.088	9.450	11.813		18.900	23.625	400

KULLANILDIĞI YERLER: Un, İrmik, Yem fabrikaları ve toz bulunan endüstriyel tesisler.

MOTOR DEVRİ: 1500 dev./dak.

## PNÖMATİK ASPİRATÖRLER

30 HP		40 HP		50 HP		60 HP		75HP		100 HP		125 HP		Toplam Basınç (mmss)
Kapasite(m <sup>3</sup> /h)	Ton/24h	Kapasite(m <sup>3</sup> /h)	Ton/24h	Kapasite(m <sup>3</sup> /h)	Ton/24h	Kapasite(m <sup>3</sup> /h)	Ton/24h	Kapasite(m <sup>3</sup> /h)	Ton/24h	Kapasite(m <sup>3</sup> /h)	Ton/24h	Kapasite(m <sup>3</sup> /h)	Ton/24h	20 C - Çalışma Şartları
5.155	62	6.873	82	8.591	103	10.309	124	12.886	155	17.182	206	21.477	258	1100
5.108	61	6.811	82	8.514	102	10.216	123	12.770	153	17.027	204	21.284	255	1110
5.063	61	6.750	81	8.438	101	10.125	122	12.656	152	16.875	203	21.094	253	1120
5.018	60	6.690	80	8.363	100	10.035	120	12.544	151	16.726	201	20.907	251	1130
4.974	60	6.632	80	8.289	99	9.947	119	12.434	149	16.579	199	20.724	249	1140
4.930	59	6.574	79	8.217	99	9.861	118	12.326	148	16.435	197	20.543	247	1150
4.888	59	6.517	78	8.147	98	9.776	117	12.220	147	16.293	196	20.366	244	1160
4.846	58	6.462	78	8.077	97	9.692	116	12.115	145	16.154	194	20.192	242	1170
4.805	58	6.407	77	8.008	96	9.610	115	12.013	144	16.017	192	20.021	240	1180
4.765	57	6.353	76	7.941	95	9.529	114	11.912	143	15.882	191	19.853	238	1190
4.725	57	6.300	76	7.875	95	9.450	113	11.813	142	15.750	189	19.688	236	1200
4.686	56	6.248	75	7.810	94	9.372	112	11.715	141	15.620	187	19.525	234	1210
4.648	56	6.197	74	7.746	93	9.295	112	11.619	139	15.492	186	19.365	232	1220
4.610	55	6.146	74	7.683	92	9.220	111	11.524	138	15.366	184	19.207	230	1230
4.573	55	6.097	73	7.621	91	9.145	110	11.431	137	15.242	183	19.052	229	1240
4.536	54	6.048	73	7.560	91	9.072	109	11.340	136	15.120	181	18.900	227	1250
4.500	54	6.000	72	7.500	90	9.000	108	11.250	135	15.000	180	18.750	225	1260
4.465	54	5.953	71	7.441	89	8.929	106	11.161	134	14.882	179	18.602	223	1270
4.430	53	5.906	71	7.383	89	8.859	105	11.074	133	14.766	177	18.457	221	1280
4.395	53	5.860	70	7.326	88	8.791	105	10.988	132	14.651	176	18.314	220	1290
4.362	52	5.815	70	7.269	87	8.723	105	10.904	131	14.538	174	18.173	218	1300
4.328	52	5.771	69	7.214	87	8.656	104	10.821	130	14.427	173	18.034	216	1310
4.295	52	5.727	69	7.159	86	8.591	103	10.739	129	14.318	172	17.898	215	1320
4.263	51	5.684	68	7.105	85	8.526	102	10.658	128	14.211	171	17.763	213	1330
4.231	51	5.642	68	7.052	85	8.463	102	10.578	127	14.104	169	17.631	212	1340
4.200	50	5.600	67	7.000	84	8.400	101	10.500	126	14.000	168	17.500	210	1350
4.169	50	5.559	67	6.949	83	8.338	100	10.423	125	13.897	167	17.371	208	1360
4.139	50	5.518	66	6.898	83	8.277	99	10.347	124	13.796	166	17.245	207	1370
4.109	49	5.478	66	6.848	82	8.217	99	10.272	123	13.696	164	17.120	205	1380
4.079	49	5.439	65	6.799	82	8.158	98	10.198	122	13.597	163	16.996	204	1390
4.050	49	5.400	65	6.750	81	8.100	97	10.125	122	13.500	162	16.875	203	1400

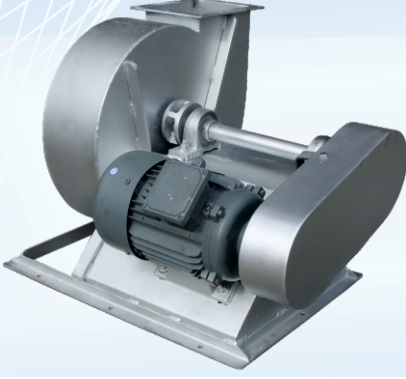
KULLANILDIĞI YERLER: Un, İrmik, Yem fabrikaları.

MOTOR DEVRİ: 3000 dev./dak.

## Kayıř Kasknak Tahrikli Vantilatörler UMT-05

### Kullanım Alanları:

Endüstriyel egzoz toz toplama ve havalandırma tesislerinde



## Kot Kurutma Vantilatörleri

## UMT-06

### Kullanım Alanları:

- Tekstil kurutma makinalarında



UMT-07

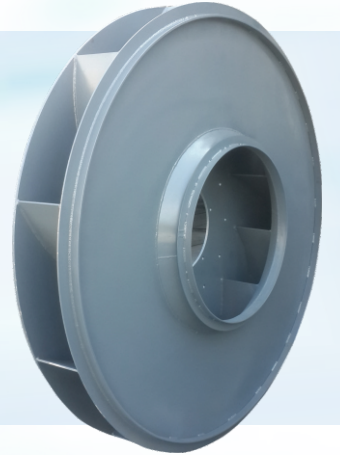
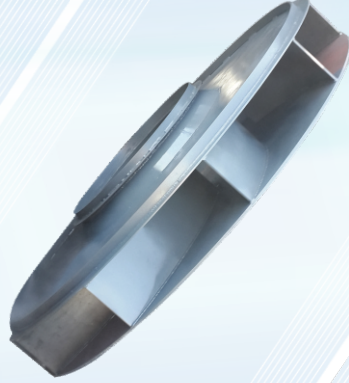
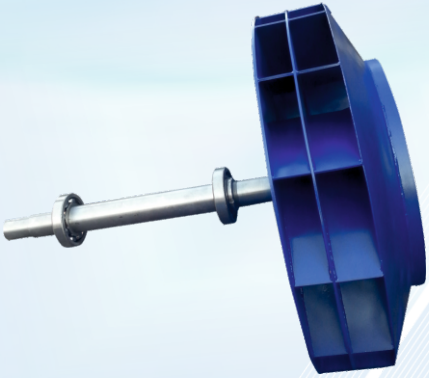
Oluklu Mukavva Vantilatörleri

**Kullanım Alanları:**

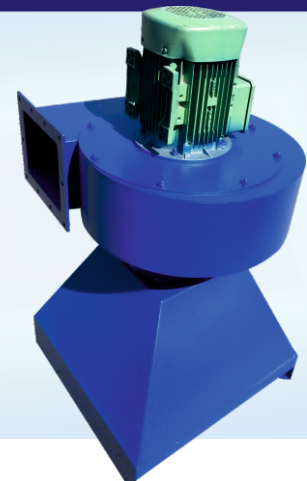
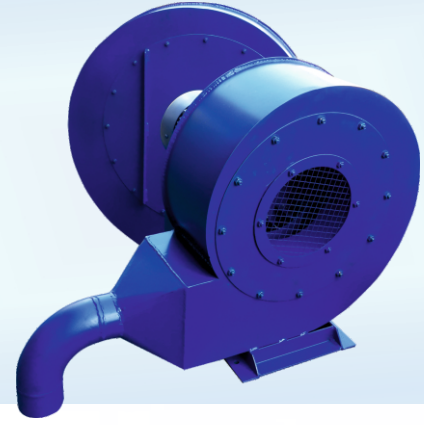
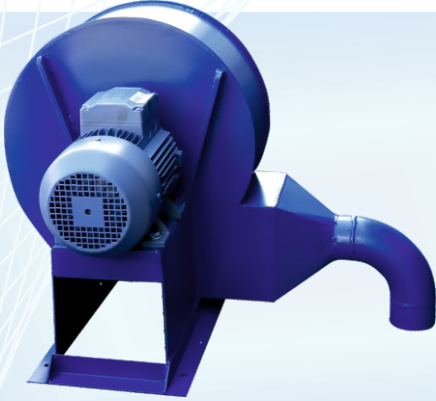
- ◀ Mukavva baskı makinalarında vakum amaçlı olarak ( isteğe bağlı susturucu üretilebilir )



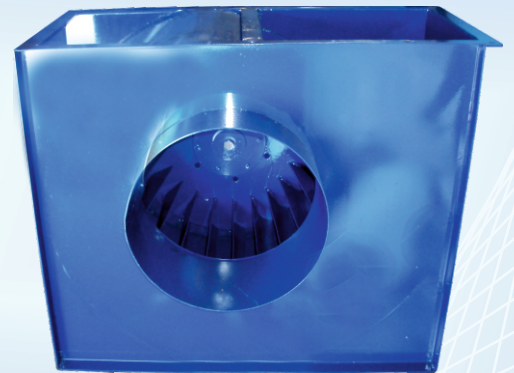
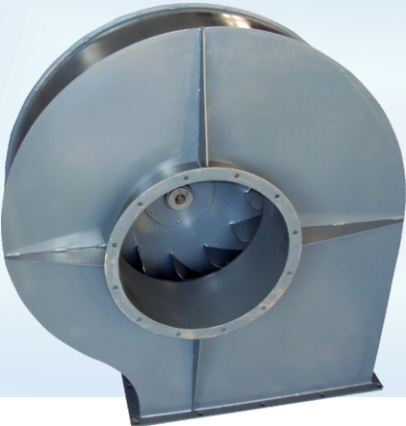
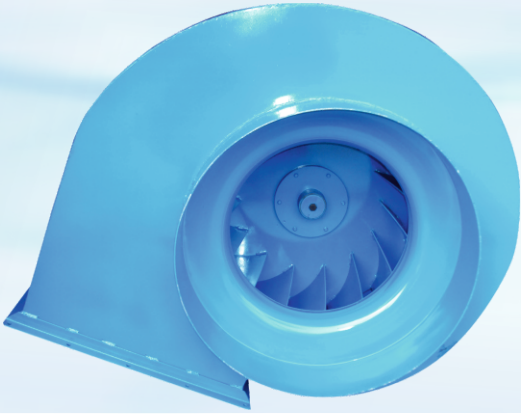
Rotorlar



## Özel Vantilatörler

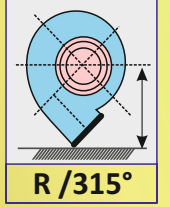
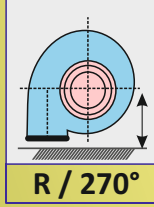
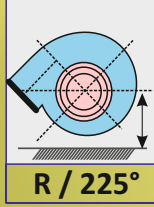
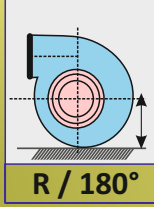
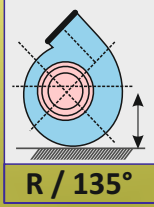
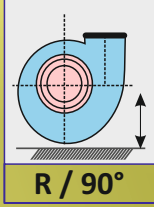
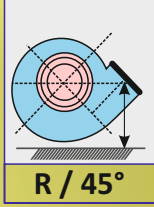
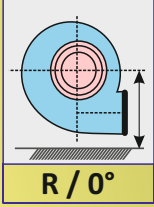




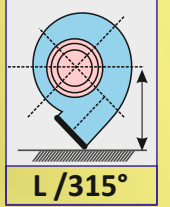
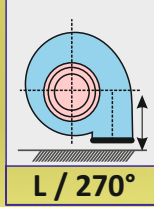
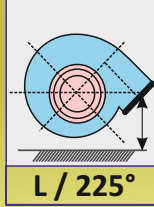
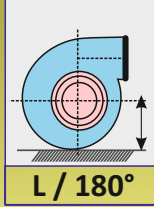
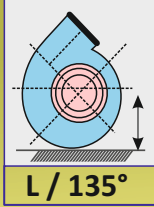
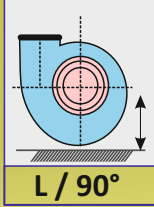
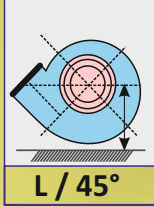
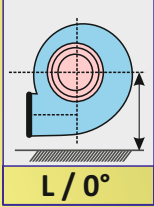


## SALYANGOZ TİPİ VANTİLATÖRLERİN POZİSYON CETVELİ

SAĞ  
YÖN R

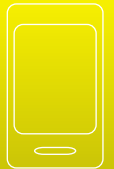


SOL  
YÖN L



Not: Pozisyon Cetveli vantilatöre emiş ağızı tarafından bakış durumuna göre düzenlenmiştir.

- ▶ ALAPALA MAKİNA GIDA SAN. TİC. A.Ş. (ÇORUM)
- ▶ AKDAŞ DÖKÜM SAN. TİC. A.Ş. (ANKARA)
- ▶ AKMERCAN TUR. TAŞM. SAN.
- ▶ AK NIŞASTA SAN. TİC. A.Ş. (KIRKLARELİ)
- ▶ ADALAR KİMYA SAN. TİC. LTD.ŞTİ.
- ▶ ARPAŞ A.Ş.
- ▶ ASFALTSAN
- ▶ ATAÇ MAKİNA SAN.TİC. LTD. ŞTİ.
- ▶ AYDIN MENSUCAT A.Ş.
- ▶ CARGİLL TARIM ve GIDA SAN.A.Ş. (BURSA)
- ▶ ÇAĞLAR GIDA AMBALAJ SAN.TİC. LTD.ŞTİ. (TRABZON)
- ▶ EGE GIDA SAN. TİC. LTD.ŞTİ. (GAZİANTEP)
- ▶ EM-TAV MAKİNA SAN.TİC.LTD.ŞTİ.
- ▶ ERTAN UN GIDA SAN. TİC. A.Ş. (MANİSA)
- ▶ ESMAN ÇEGA
- ▶ FIRAT PLASTİK SAN. TİC. A.Ş.
- ▶ GÜLSAN PROFİL ve CAM İŞLEME SAN. TİC. LTD.
- ▶ İSFALT A.Ş.
- ▶ İLERİ MAKİNA SAN.TİC.LTD.ŞTİ.
- ▶ KARDEŞLER ELEKTRİK SAN.TİC. LTD. ŞTİ.
- ▶ KİLİM GRUBU SAN. TİC. A.Ş.
- ▶ MEHMETLER YAĞ SAN. TİC. A.Ş.(LÜLEBURGAZ)
- ▶ NALBANTOĞLU METAL SAN.TİC.LTD.ŞTİ.
- ▶ OMİS MAKİNA SAN. ve DIŞ TİC.LTD.ŞTİ.
- ▶ SAADET GIDA A.Ş.
- ▶ SERİ MAKİNA İMALAT SAN. ve TİC. LTD. ŞTİ.
- ▶ TEK ASFALT
- ▶ TOSYALI DEMİRÇELİK A.Ş. (İSKENDERUN)
- ▶ ÜÇYILDIZ LÜKS AMBALAJ SAN.TİC. A.Ş. (KAYSERİ)
- ▶ VATAN MAKİNA SAN. TİC. LTD. ŞTİ.
- ▶ YOLFEN İNŞAAT ASFALT SAN.TİC.LTD.ŞTİ.



Adress:

Organize Sanayi Bölgesi  
Dolapdere Sanayi Sitesi  
13 Ada No:62 İkitelli Başakşehir - İST.

Email: Website:

info@umutfan.com  
www.umutfan.com

Phone:

Tel.:0212 671 91 26  
Fax:0212 671 91 27